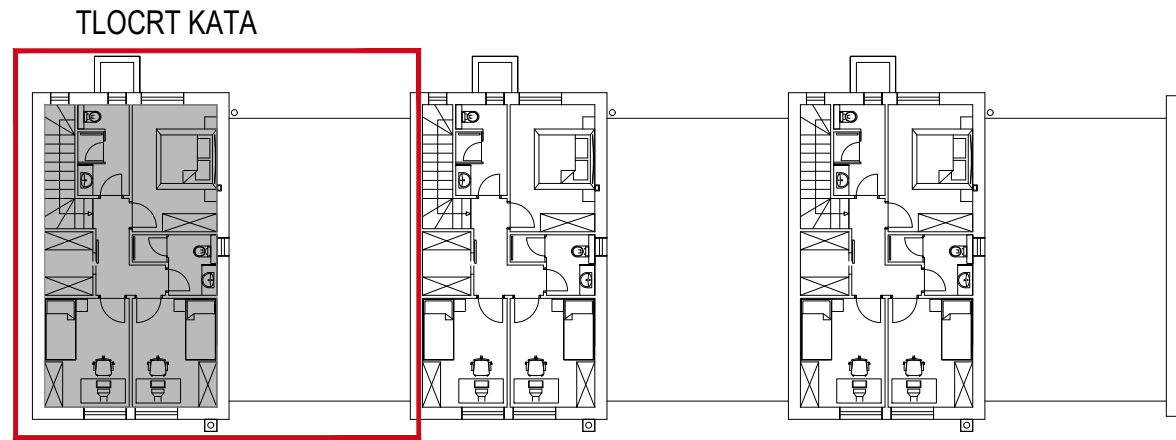
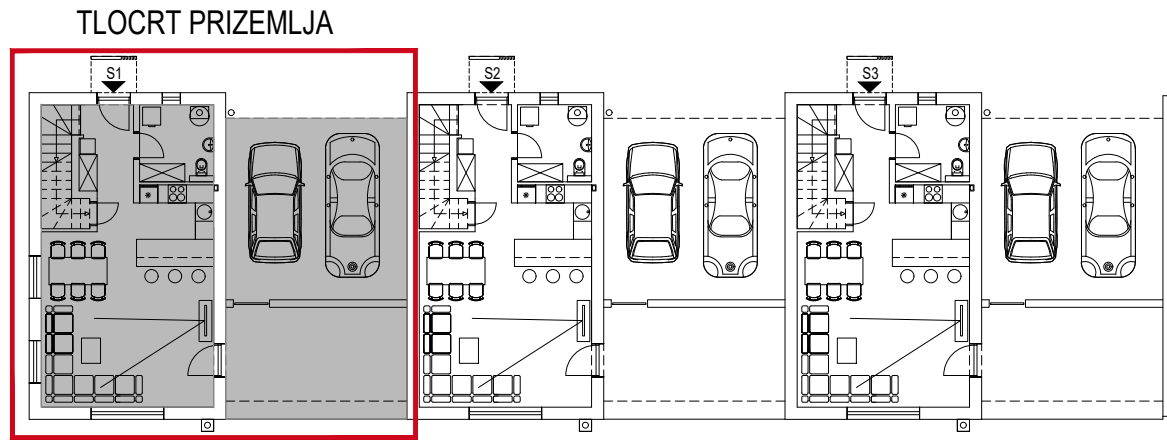
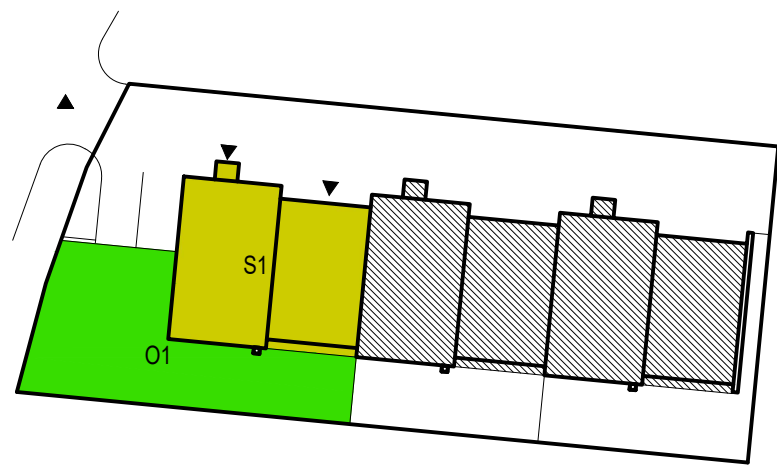


POZICIJA STANA "S1" U ZGRADI

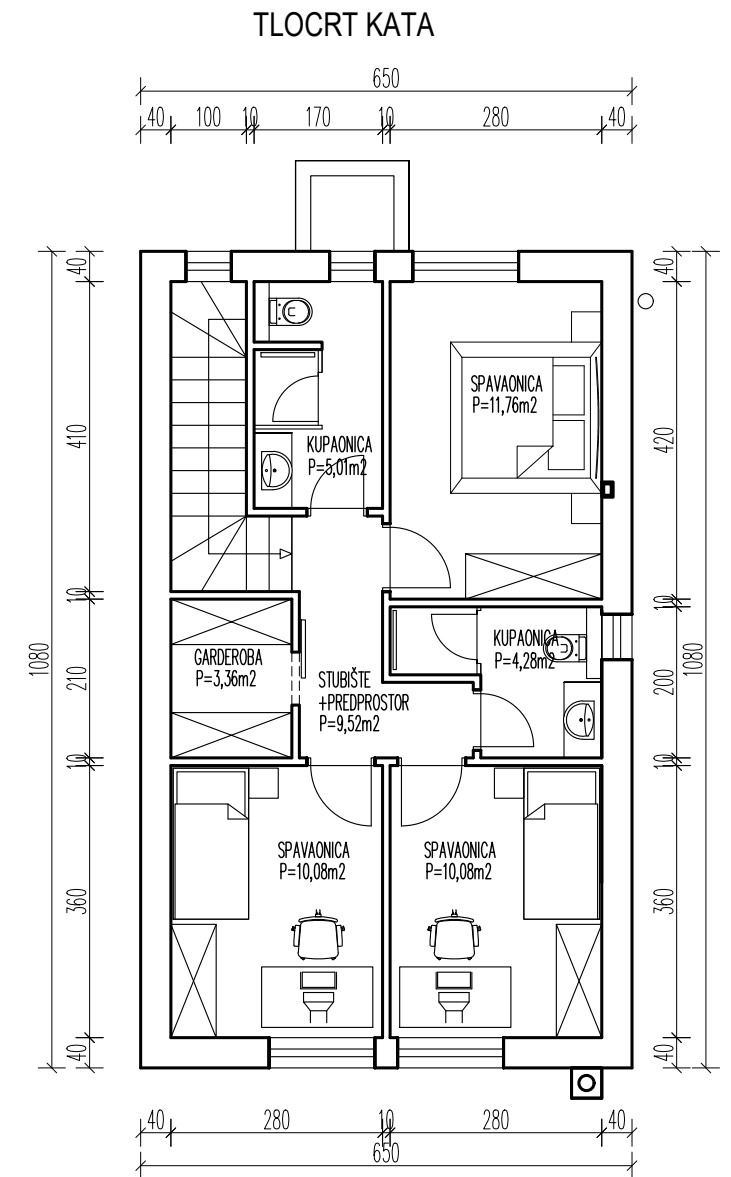
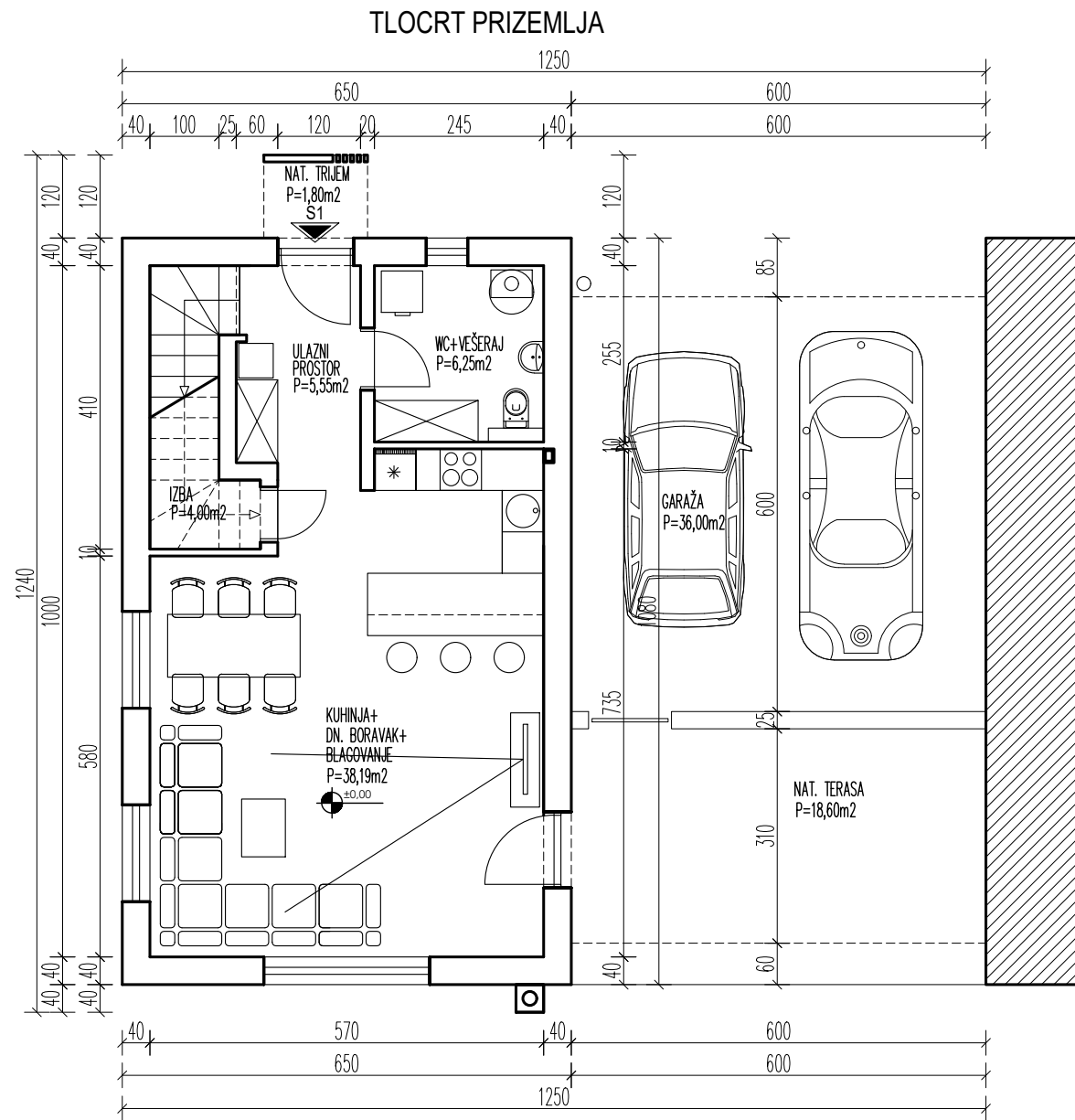


SITUACIJA



STAN S1	stvarno (m2)	reducirano (m2)
PRIZEMLJE - ZATVORENI DIO	53,99	53,99
KAT- ZATVORENI DIO	54,09	54,09
NATKRIVENI TRIJEM	1,80	0,90
NATKRIVENA TERASA	18,60	9,30
NATKRIVENA GARAŽA	36,00	18,00
UKUPNO STAN S1	164,48	136,28

OKUĆNICA / O1 145,15 m2



STAN S1

